

A Full Time, Year Round Licenced
Child Care at Nakusp Elementary
School

A Child Care Centre HUB for Nakusp –

*Update and Timeline for
Construction*



Presented to the
Board of Education
October 20, 2020

\$3.15 Million Funding Approval

September 17, 2020 - \$3,000,000 in funding from MCFD New Spaces Child Care Fund and \$150,000 from Columbia Basin Trust was approved for this exciting project benefiting Nakusp and area children and families

Board Approval

The Board of Education approved proceeding with the Nakusp Child Care Centre HUB project on September 28, 2020













Conceptual Design:

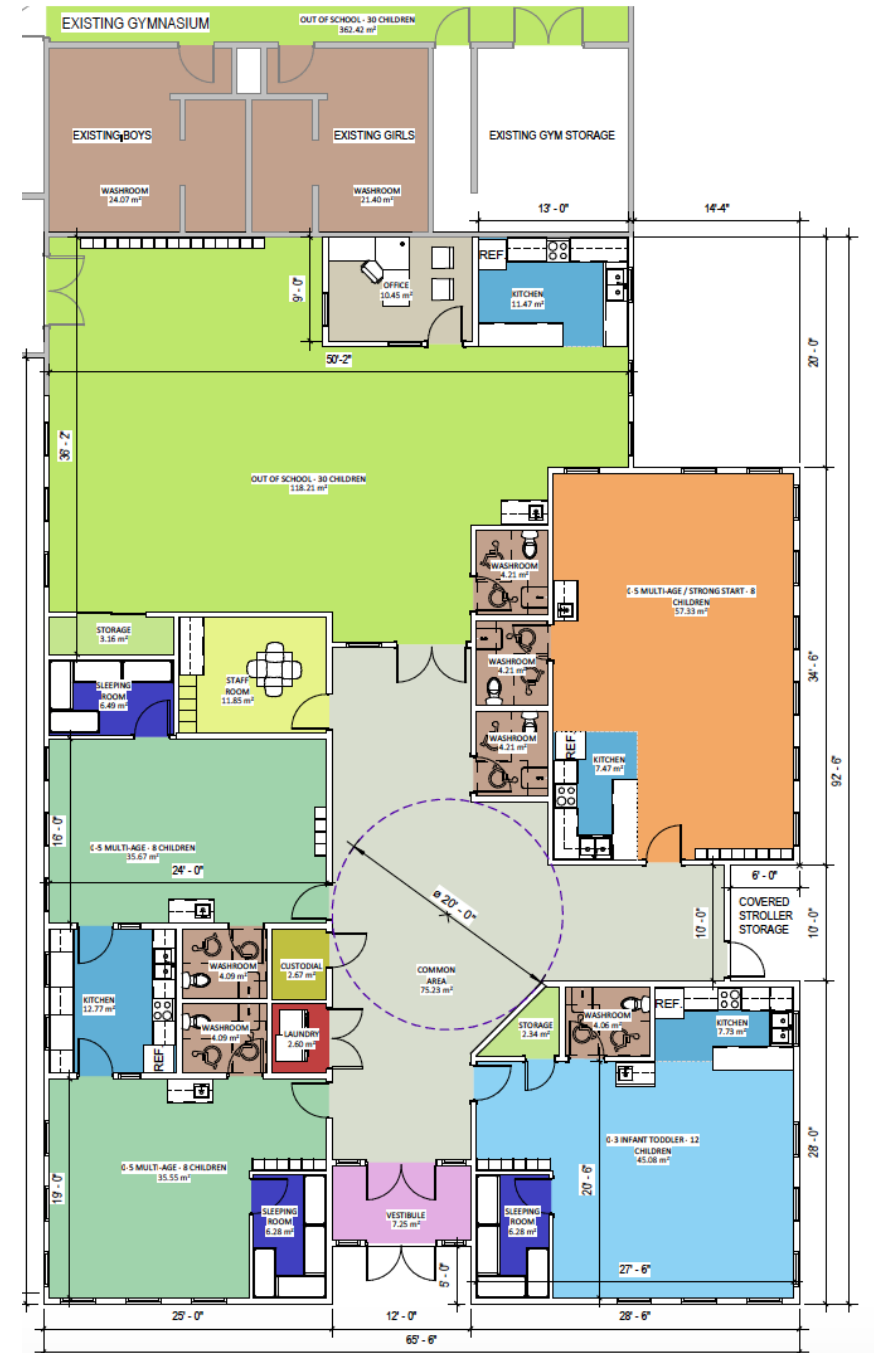


- Consultation with NES Staff/Parents and Board in October/November regarding child care centre design

Conceptual Design: Nakusp Child Care Centre

Room Legend

	0-3 INFANT TODDLER - 12 CHILDREN		OFFICE
	0-5 MULTI-AGE - 8 CHILDREN		OUT OF SCHOOL - 30 CHILDREN
	0-5 MULTI-AGE / STRONG START - 8 CHILDREN		SLEEPING ROOM
	COMMON AREA		STAFF ROOM
	CUSTODIAL		STORAGE
	KITCHEN		VESTIBULE
	LAUNDRY		WASHROOM



Conceptual
Design:
3D View
Nakusp Child
Care Centre



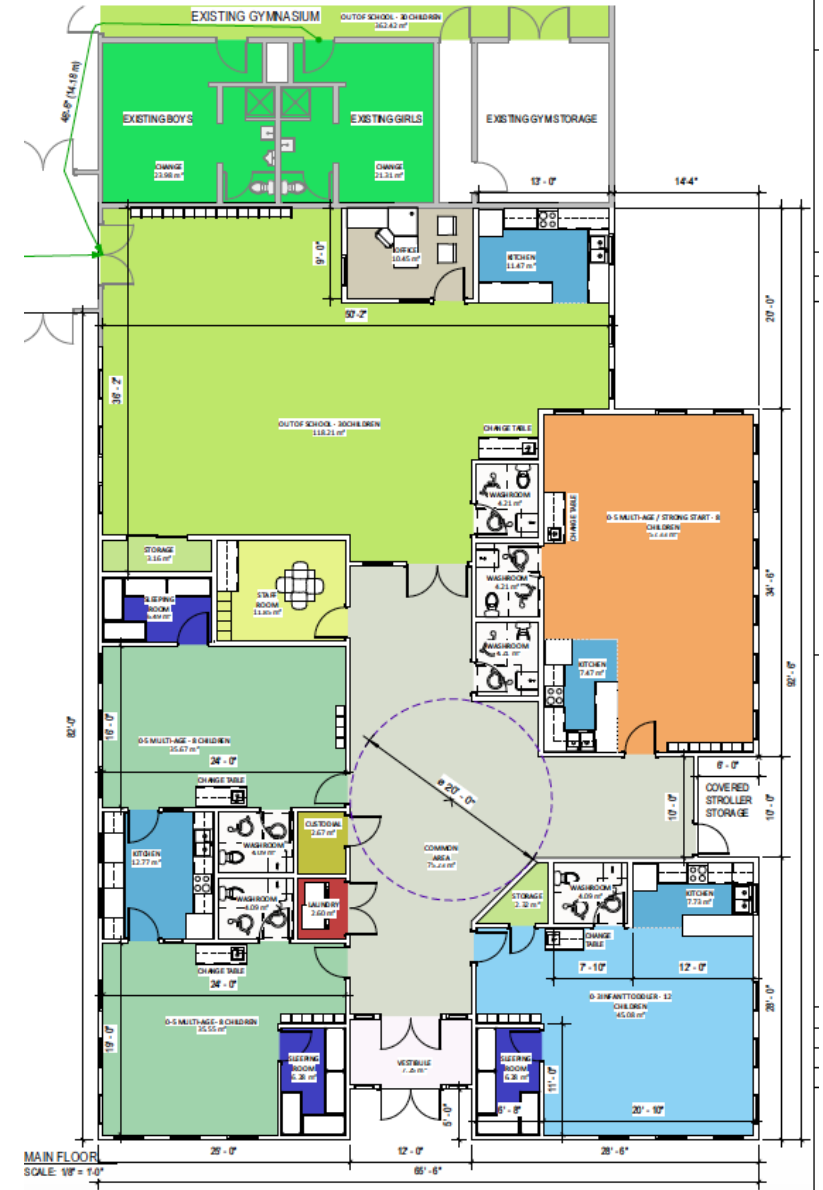
Conceptual Design:

- Before and after school care for 5 – 12 year olds to be activity and learning focused: fine arts classes (music, drama, dance, visual art) and physical activities such as yoga and various sports
- A new and larger 57 square metre Strong Start Centre will have ample space for the many 0-5 year olds and their caregivers
- A new and safer parking area and drop off zone to the west



Conceptual Design: Out of School Program

- Out of School Child Care 118 sq metres in area to be used for before and after school care for NES 5-12 year old school age children
- High quality fine and performing arts and physical literacy learning programming
- The kitchen and seating area may also be used for breakfast and hot lunch programs for NES students





Project Timeline – October 2020 – May 2022

**October – November
27, 2020**

1. Project Design

October 2020

2. Geotech Assessment
3. HazMat Assessment

**December – January
2021**

3. Portable Demolition

**January – February
2021**

4. Construction RFP

**March 2021 – April
2022**

5. Construction

April – May 2022

6. Furniture and
Equipment Installation

May 2022

7. Licencing

May 2022

8. Child Care Centre
Opens